

TALLAHASSEE/LEON COUNTY COMMUNITY VALUES PRESENTATION

Community Presentation – 12/11/2023

- Plan Purpose
- Citizen Committees
- Visioning Results
- Community Value Statements
- Next Steps

TALLAHASSEE
LEON COUNTY

2055
VISION

A
FOCUSED
FUTURE

PROJECT TEAM |



Brennan Kane,
Assoc. AIA
Project Manager



Kailey Saver, AICP
Deputy Project Manager



Aspen Wilkins
Planning Support



Abel Verdi
Planning Support



Matt Bucchin
QA/QC



David Muntean, Jr.
Local Liaison

STRATEGIC PARTNERSHIPS

CODE STUDIO



DEPARTMENT OF URBAN AND REGIONAL PLANNING
THE BARNEBEY PLANNING AND DEVELOPMENT LAB

ANTIN
CONSULTING, LLC

URBAN3



PLAN PURPOSE

- ❑ **Define** the community's vision for the future through various methods of engagement
- ❑ **Analyze** Tallahassee-Leon County today
- ❑ **Update** the Land Use & Mobility Elements of the Comprehensive Plan
- ❑ **Provide** implementation steps and recommendations to continue updates to the Comprehensive Plan



COMMUNITY VISION

**Comprehensive
Plan**

**Mobility
Plan**

**Parks Master
Plan**

**Trails and
Greenways
Master Plan**

**Urban Forest
Master
Plan**

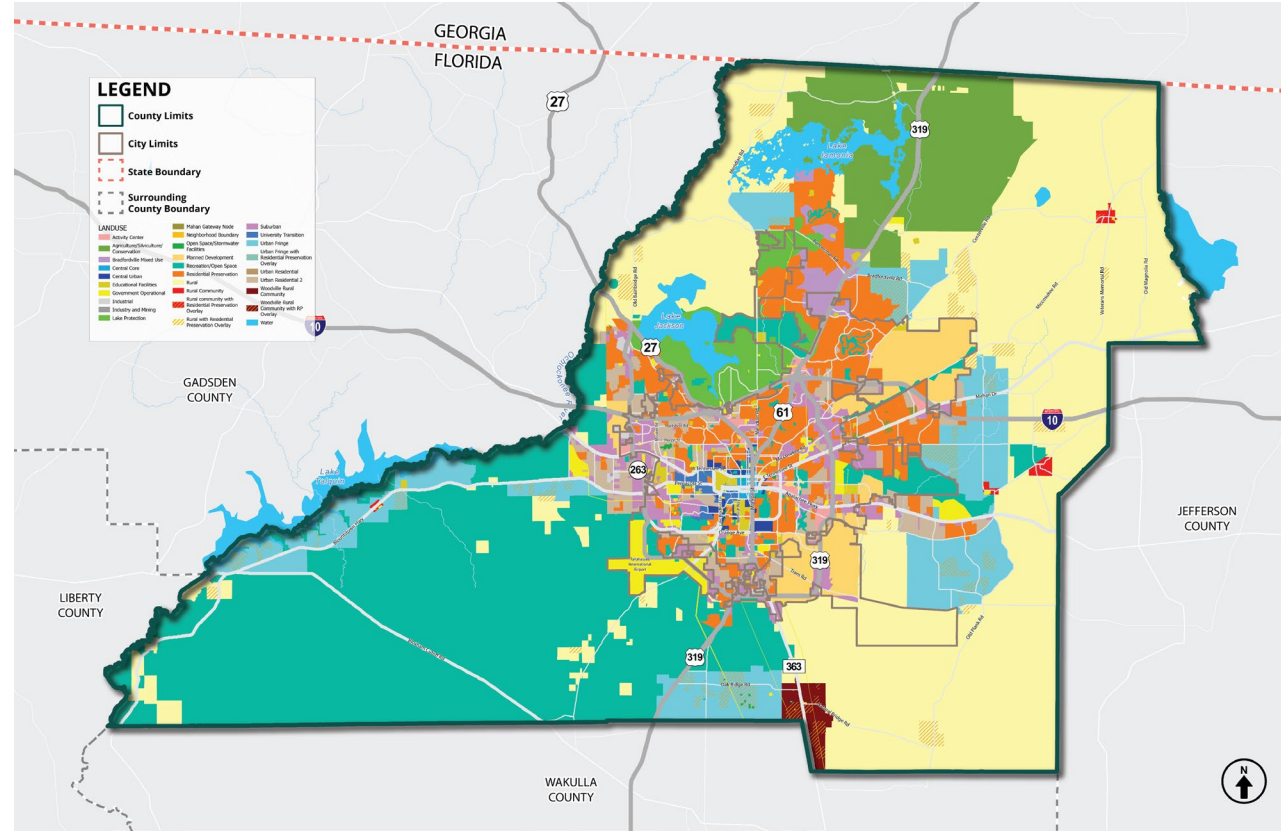
**Streetscape
Master Plan**

Etc.

- ❑ **A Vision Plan** develops a **long-term direction** for the community
- ❑ **The Vision Plan** is used as an overarching framework of community values and principles that guide future growth
- ❑ **The Vision Plan** will serve as a foundation for Comprehensive Plan updates (F.S. 163.3177(1)(f))



- Required by the State
- Regularly Evaluated (every 7-10 years)
- Designed to:
 - Guide Future Development
 - Ensure consistency
 - Identify public expenditures
 - Protect natural resources



PLANNING PHASES



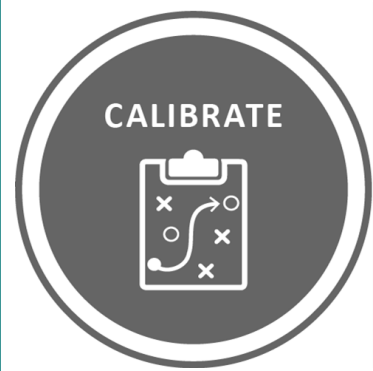
Spring –
Fall
2023



Fall
2023



Fall –
Spring
2024



Spring –
Summer
2024



Spring –
Winter
2024



Winter
2024 –
Spring 2025

VISION PLAN

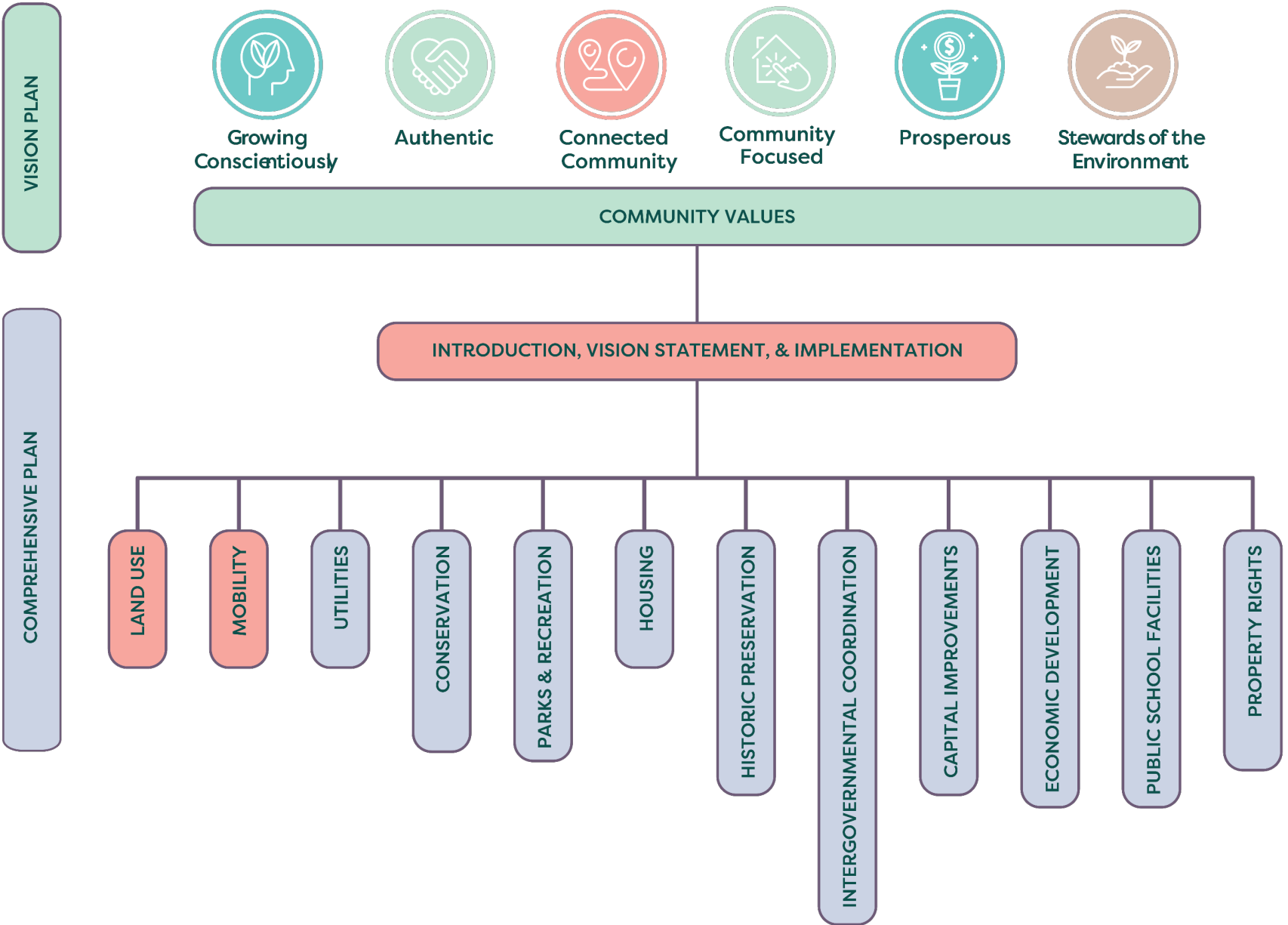
COMPREHENSIVE PLAN

WHAT WE ARE UPDATING

TALLAHASSEE
LEON COUNTY

2055
VISION

A
FOCUSED
FUTURE



VISIONING RESULTS

What is one word you would use to describe your vision for Tallahassee/Leon County in the future?



VISIONING

WHEN I THINK ABOUT _____ I GET EXCITED ABOUT
TALLAHASSEE AND LEON COUNTY'S FUTURE.

- Expanded & safe transit and mobility options
- Balanced growth
- Public school system
- Walkability
- Sustainable development
- Thomasville Road multi-use path
- More bike & pedestrian infrastructure
- Clean energy
- Complete streets
- Preservation of Tallahassee's green spaces
- Achieving carbon neutrality
- Parks, green spaces, and walkable neighborhood villages
- Sustainable living

WHEN I THINK ABOUT _____ I GET CONCERNED
ABOUT TALLAHASSEE AND LEON COUNTY'S FUTURE.

- Gentrification & Displacement
- Incompatible development
- Crime and gun violence
- Unmeasured growth
- Stagnation in pedestrian infrastructure
- Traffic congestion associated with new development
- Vacancy rates & undeveloped land
- Inequitable expansion
- Overdevelopment
- Homelessness
- Roadway maintenance and quality
- Loss of tree canopy and green spaces
- Influence of the development community on policy
- Housing, transit, economic justice/jobs, social inclusion
- Overspending on things that are not important to the public
- DOT roadways and the barriers to change them

Place a sticky note
in the box with your
responses to the
questions.

5 Meetings Held (*Virtually*):

- ❑ Neighborhood Groups
- ❑ Land Use & Economic Interest Groups
- ❑ Transportation Groups
- ❑ Conservation Interest Groups
- ❑ Citizen Committees

Purpose:

- ❑ Discuss community needs and concerns
- ❑ Provide an understanding of the community today
- ❑ Inform the Community Vision Plan (Community Values)
- ❑ Identify issues to consider when evaluating the GOP's

What's going well...

- ❑ Access to education and government institutions
- ❑ The community loves the urban forest and abundant parklands
- ❑ Great sense of community
- ❑ There are big city resources with a small-town feel
- ❑ Generally high quality of life
- ❑ Recent economic development has provided more jobs
- ❑ Great location, regionally significant



What needs improvement...

- ❑ More transparency is needed (related to developments, projects, decision-making, etc.)
- ❑ The Comprehensive Plan is too detailed
- ❑ Felt that policies not enforced or executed
- ❑ Lack of affordable housing/housing options
- ❑ Better transportation and mobility options are needed, especially in the MMTD
- ❑ Downtown should be more vibrant
- ❑ There needs to be a balance between growth and conservation
- ❑ Concerns regarding the changing climate
- ❑ General concerns related to crime, poverty, homelessness, and food deserts



Survey open between
September 25th and
November 26th

519 Total Responses

Advertising Tactics

Posted on project website, emailed out to thousands of community members, social media posts, word of mouth (educational roadshow, ambassador program)

Where is Tallahassee - Leon County Doing Well?

- Access to parks, recreation, and open space
- Overall quality of life
- University and education options

How this information can be used:

- Ensure policies reflect the continued growth and protection of parks, recreation, open space, and conservation areas
- Review the GOP's with "Quality of Life" in mind
- Continue to collaborate and coordinate with the School Board and Educational Institutions

Where does Tallahassee - Leon County Need Improvement?

- Availability of housing options
- Safe bicycle and pedestrian options
- Transit access and coverage

How this information can be used:

- Review Future Land Use Categories to accommodate a variety of housing options, where appropriate
- Identify updates to the Land Development Regulations
- Ensure policies support multi-modal transportation needs within and outside of the MMTD
- Use Context Sensitive Roadway Characteristics (FDOT) for all roadways
- Continued coordination and collaboration between Star Metro, design roadways to support transit users, improve “Last Mile” connections

Top 3 Strengths

- Delivery of public services
- Access to recreation and open space
- University/educational hub and options

How this information can be used:

- Continue to evaluate and plan for the efficient delivery of public services
- Use Scenario Modeling for aligning growth to public services
- Support and include policies for parks, recreation, open space, and conservation measures
- Partner with organizations to continue the growth of conservation efforts
- Support growth and development around Education and University Hubs
- Initiate efforts to reduce the “brain drain”
- Evaluate opportunities to increase employment options for all levels

Top 3 Concerns

- Government transparency and communication
- Availability of housing options
- Safe bicycle and pedestrian options

How this information can be used:

- Improve information sharing and transparency related to Land Use Changes
- Adopt a “community guide” to the comprehensive plan
- Determine and share standards for capital improvement projects
- Evaluate densities and intensities to support “missing middle” housing options
- Incorporate a variety of bicycle and pedestrian facilities into proposed cross-sections, plans, and regulations
- Review opportunities for trails both on-street and off-street

What do people love about Tallahassee – Leon County?

Parks, trees, natural beauty and green spaces

Bigger city retail and services with small town feel

Feeling of community

What would people change about Tallahassee – Leon County?

Transportation access and options

Housing options and affordability

More balanced growth with a better abundance of services



COMMUNITY VALUES



PURPOSE

VISION PLAN



Growing Conscientiously



Authentic



Connected Community



Community Focused



Prosperous



Stewards of the Environment

COMMUNITY VALUES

INTRODUCTION, VISION STATEMENT, & IMPLEMENTATION

COMPREHENSIVE PLAN

LAND USE

MOBILITY

UTILITIES

CONSERVATION

PARKS & RECREATION

HOUSING

HISTORIC PRESERVATION

INTERGOVERNMENTAL COORDINATION

CAPITAL IMPROVEMENTS

ECONOMIC DEVELOPMENT

PUBLIC SCHOOL FACILITIES

PROPERTY RIGHTS



GROWING CONSCIENTIOUSLY

We are **growing conscientiously**. Tallahassee and Leon County balance the needs of conservation and growth to allow for purposeful development. We maintain the distinction between rural and urban areas to provide for more diversity in lifestyle choices and housing options, provide high-quality public services, reduce sprawl, and ensure fiscal resilience.

Relevant Topics:

- Land use diversity
- Housing choices
- Urban Service Area
- Fiscal responsibility
- Public services
- Infill development
- Density and incremental development





AUTHENTIC

DRAFT

We are an **authentic community**. Our history is diverse, and at times, unbalanced. We acknowledge that through historical decision-making, some communities may have been adversely affected. Our diverse and unique neighborhoods make Tallahassee-Leon County the thriving place it is today. Forward-thinking policies and investments promote and preserve our beloved communities.

Relevant Topics:

- Vulnerability
- Targeted investments
- Accessibility to goods and services
- Environmental Justice





CONNECTED COMMUNITY

We are a **connected community**. Tallahassee and Leon County offer transportation options that are affordable, equitable, and accessible. The network of roadways, trails, sidewalks, bicycle facilities, and transit services provide complete and safe connections throughout the community. The movement of goods, services, and people throughout the community is efficient and reliable.

Relevant Topics:

- Roadway infrastructure
- Multi-modal transportation
- Complete streets & context-sensitive design
- Transit service
- Freight routes





COMMUNITY FOCUSED

We are **community-focused**. Our policies and practices balance the needs of our diverse community.

Our activity centers, nodes, and corridors are designed and built at a human scale to achieve lively, safe, sustainable, and healthy places. We acknowledge that our community's character is distinct and must be honored and bolstered.

Relevant Topics:

- Community character
- Walkable design
- Safety
- Diversity of place
- Community arts and culture





PROSPEROUS

We are **prosperous**. Tallahassee and Leon County support economic growth, innovation, and development and continue to attract new local and national businesses. We have a wide range of employment opportunities to support various skill-levels and needs. Our community supports small business development and entrepreneurship.

Relevant Topics:

- Economic development
- Tax base
- Business support and growth
- Downtown growth
- Community partnerships



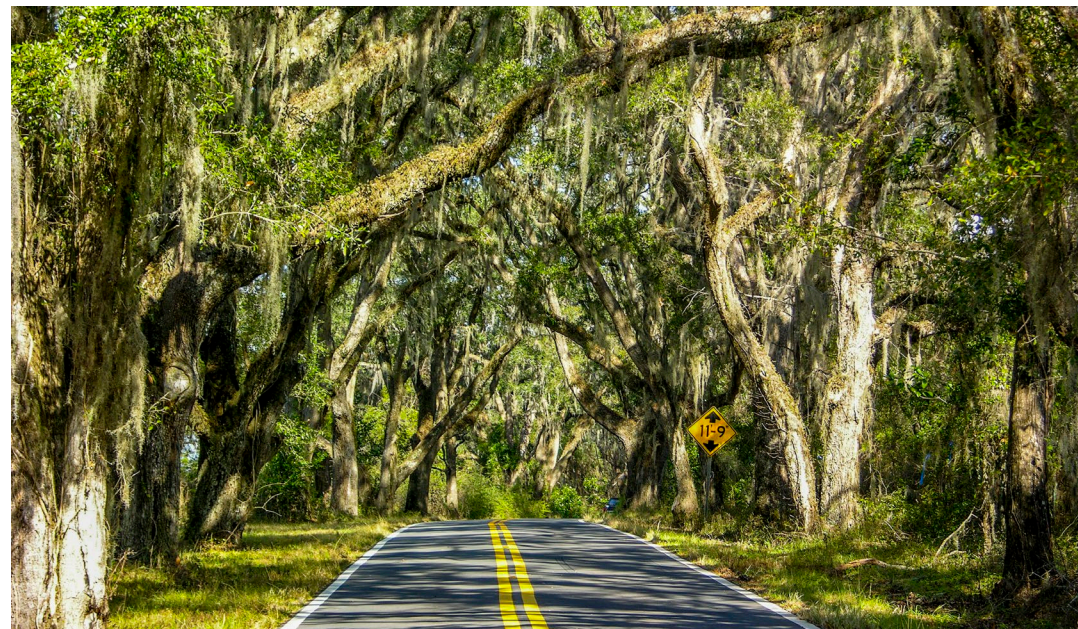


STEWARDS OF THE ENVIRONMENT

We are **stewards of the environment**. Our community has access to clean water and air, conservation areas, and an abundance of parks and recreation opportunities. Our community will be balanced between built and natural spaces to promote long-term sustainability and protect against adverse impacts to the natural environment. Our residents have a healthy environment for mental, physical, and social health.

Relevant Topics:

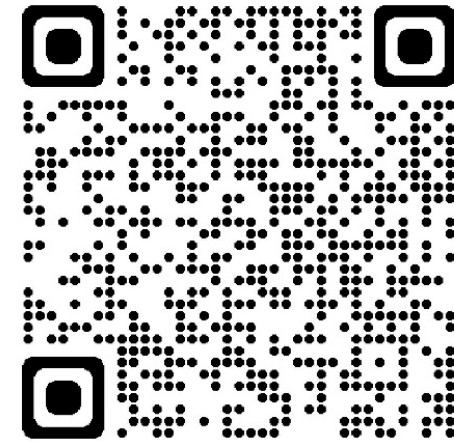
- Parks and Recreation
- Conservation
- Urban Forest
- Floodplains and wetlands
- Social interactions
- “Green” built environment
- Environmental resilience



Upcoming Meetings and Surveys for the Vision Plan

- ❑ Strengthen, Transform, Enhance, Preserve (STEP) Framework Meeting Series
 - ❑ January 29 at 12:30 and 5:30
 - ❑ January 30 at 12:30 and 5:30
- ❑ Vision Plan Presentation and Survey (Mid 2024)

Project Website



www.compplantlc.com

CONTACT INFORMATION

PLACE Project Manager:

Melinda Mohrman

**Melinda.Mohrman@tal
gov.com**

Halff Project Manager:

Brennan Kane

bkane@halff.com

Halff Deputy Project Manager:

Kailey Saver

ksaver@halff.com